

SHINGLETOWN EMERGENCY RADIO (SER) NEIGHBORHOOD REPORTING

[This is not 911]

COMMUNICATIONS PLAN DESIGNED BY: A. NATHAN ZELIFF

Attorney at Law

CCW Instructor

Adjunct Professor – Simpson University

General Class Ham Radio Operator - K6PDS

May 6, 2019 – Brief Introduction © K6PDS N. ZELIFF

SER Plan – Multi-Purpose Reporting, including ...

- ACTIVE FIRE NET (Forest Fire / Ember Watch)
 - Plain English
- Fire Watch Brevity Codes – Q Codes (e.g., QWA, QWF ... etc... to facilitate brevity, monitoring and fire watch without use of “trigger” words – “smoke”, “fire”).
- Smoke Check Reporting Net (seeking to locate unknown source of smoke using compass, triangulation, wind, etc...).
- Situation reports, Communications Blackout, Earthquake Reporting, Needs Reporting , Emergency / Priority ... plain English with selective use of Q Codes (based upon situation) for rapid transmit, review and recommendations.
- Area Neighborhood Net Reporting – Fire Alerting, Evacuation matters, ... and more...

SITUATION REPORTS

(PLAIN ENGLISH AND Q Codes):

The purpose of this initial presentation is to illustrate the flow of traffic from:
your Neighborhood
to your Area Coordinator; and
to the Net Control station.

How you send your message
will impact more than you.

Examples of Situations and Reporting

Situation - Shasta Forest Village :

**Earthquake - glassware broken, books off shelf,
floor lamps topple.**

**Electricity is off. All Communications out - no land lines, no cell
phone, 911 not working, internet not working.**

All stations advising-I am okay and don't need assistance.

Let's look at Format Tango 9 M (MURS / FRS Reporting form)

SITREP CHECKLIST FOR NON HAM MURS/FRS AUTH: AXS ZXV RWB5 20190427 **FORMAT TANGO 9M**

(BASED ON SER NET FORMAT TANGO 9A VERSION 20190427)

THIS IS NOT 911 - IF YOU HAVE AN EMERGENCY CALL 911

AREA LEAD TAKE IN REPORT: FOR RADIO REPORTS FROM YOUR NEIGHBORHOOD EACH REPORT SET IS 2 PAGES

→ Date: _____ Time: _____ HRS **THIS IS RPT IS SET # ___ of ___**

NEIGHBORHD (E.G., Shasta Forest): → _____ **Division 1 2 3 4 5**

MURS / FRS STATIONS: YOU ONLY CHECK CURRENT PROBLEMS/ CONDITIONS IN LEFT COLUMN - THEN TRANSMIT TO YOUR AREA LEAD

AREA LEADS CHECK ITEMS BELOW AS REPORTED BY EACH NEIGHBOR IN YOUR NEIGHBORHOOD AND PREPARE SUMMARY FOR TRANSMIT TO AREA COORDINATOR

TOTAL COUNT EACH CATEGORY

ENTER STATION NUMBER YOUR NEIGHBORHOOD PREVIOUSLY ASSIGNED TO NEIGHBORHOOD STN GIVING RPT OR ENTER THE STATIONS NAME → →

	#	#	#	#	#	#	#	#	#	
--	---	---	---	---	---	---	---	---	---	--

▶ **QXA** = ALL OKAY AND NOTHING TO REPORT AT MY QTH. [IF NOT "QXA" THEN YOU CIRCLE / WRITE IN CURRENT PROBLEMS / CONDITIONS-BELOW:

▶ **QXi D** BELOW ARE SITREPS

/ A ELECTRICITY IS OFF. [YOU WOULD SAY: "QXi D SLASH A" OR SAY "ELECTRICITY IS OFF" IF THAT IS YOUR Areas procedure.										
/ B TELEPHONE - LAND LINES NOT WORKING										
/ C CELL PHONES NOT WORKING										
/ D 911 SERVICE NOT WORKING										
/ E INTERNET IS NOT WORKING										
/ F BLACKOUT - ALL COMMS / ELECT. UTILITY (ABOVE) OFF										
/ G FLOODING IN AREA										
/ i HIGH WINDS / STORM DAMAGE										
/ J WATER SERVICES NOT WORKING										
/ K HEAVY SNOW / SNOW CHAINS REQUIRED										

EARTHQUAKE SEVERITY MIKE MIKE 1 TO 8 (Mod Mercali Scale)

/ M1 NOT FELT AT ALL										
/ M2 BARELY NOTICED										
/ M3 KNOW IT WAS AN EARTHQUAKE SOMEWHERE										
/ M4 WINDOWS, DISHES RATTLE (ANY STN ACTIVATE NET)										
/ M5 PICTURES MOVE, DOORS SWING, SMALL ITEMS ON FLOOR										
/ M6 GLASSWARE BROKEN, BOOKS OFF SHELF, FLOOR LAMPS TOPPLE										
/ M7 FURNITURE BROKEN, CANNOT STAND, CHIMNEYS FALL										
/ M8 BUILDINGS COLLAPSE										
/ R 1 REQUESTING SET UP OF NBHD COMMS CENTER IN AO										
/ R 2 REQUESTING NBHD RAPID Needs Damage Assessmt for AO										
/ R 9 RADIO RESPONDER-I AM AVAILABLE FOR FIELD CALL OUT.										

YOU MUST ANSWER "/Y" OR "/N_" IF TRANSMIT ANY OF ABOVE (/A TO /M8)

/ Y = I AM OKAY AND DO NOT NEED ASSISTANCE.

OR, MUST ADVISE OF NEEDS BELOW

STATION # / Name ▶	#	#	#	#	#	#	#	#	#	TOTAL COUNT EACH CATEGORY
THIS IS NOT 911- IF YOU HAVE AN EMERGENCY CALL 911										
/ N3 I NEED [AREA NEEDS] PROPANE										
/ N4 I NEED [AREA NEEDS] DRINKING WATER FOR /NR ___ # PEOPLE										
/ N5 I NEED [AREA NEEDS] FOOD FOR /NR ___ # PEOPLE										
/ N6 I NEED [AREA NEEDS] BATTERY (TYPE) FOR (INSERT)										
/ N7 I NEED [AREA NEEDS] FIREWOOD /NR ___ # CORDS										
/ N8 I NEED [AREA NEEDS] ASSISTANCE - OTHER SPECIFY: AT: _____										

AREA LEAD TO SUMMARIZE NEIGHBORHOOD REPORTS USING FORMAT TANGO 9A AND TRANSMIT TO AREA COORD.

SAMPLE REPORTING ON RADIO – BY MURS/FRS NEIGHBORS:

Neighbors merely report the items that they circle on Fmt Tango 9M (MURS/FRS) and report to their Area Lead.

Example-MURS/FRS:

Best Way –Neighbor says:

“Village Lead this is Village Dan
QTH B* /F /i /J /M4 /Y out”
[HAMS ARE REQUESTED TO USE THIS METHOD

- Lead says : “Roger, Next”

Other way–Neighbor says:

“Village Lead this is Village Dan
I am at my home, all communications and electric utility are off. High winds lots of storm damage at my home, water services are not working here, there has been an earthquake causing my windows and dishes to rattle, I am okay and do not need assistance. Out”

- Lead says : “Roger, Next”

• **AREA LEADS** then must summarize the reports from their neighborhood stations. The **AREA LEADS TRANSMITS A SUMMARY RPT – Using Q Code BREV RPTING** for non emergency reports. Emergency/Priority traffic is immediately sent using plain English (anyone can send emergency traffic). **EXAMPLE ASSUME 7 STNS REPORTED** in the Village Net (all non emergency reports):

ON VILLAGE FREQ: The Lead doesn’t send 7 RPTS- SENDS SUMMARY: “Village Coord this is Village Lead, REPORT Village Div 3 7 STNS reporting QTH N* QXi D /F /i /J /M4 /Y QWA** END RPT OUT”
Village Coordinator – acknowledges with “Roger”

NEXT, ON HAM NET FREQ: (VIII. Coord. RELAYS RPT to Ham NET):
NCS says – ... “Next”
Village Coord. Says: “Village”
NCS says – “Village Go”
Village Coord. Says: “Net Control this is Village Coordinator – “REPORT Village Division 3 7 STNS reporting QTH N* QXi D /F /i /J /M4 /Y QWA END RPT (call sign) OUT”

Net control says: “Roger”
Net control says: “Next “ (asking for next Station Report / Area Coord).
Net Control Next Summarizes and posts all reports – maps – recommendation, states plain English summary etc on Ham Freq...

*QTH B = HOME. *QTH N = AREA SUMMARY REPORT FROM NEIGHBORHOOD AREA LEAD.

** QWA IS A Q CODE FROM THE FIRE WATCH BREVITY CODES.

[COMPARE: HAMS USE Fmt Tango 9A AND ARE REQUESTED TO REPORT USING Q CODE METHOD].

[AREAS: if using plain English, consider propagation, static, broken communications, etc... and how such will impact comms]

Situation -Shasta Forest Village :

-Earthquake - glassware broken, books off shelf, floor lamps topple.

**-Electricity is off. All Communications out - no land lines, no cell phone,
911 not working, internet not working.**

-All stations advising-I am okay and don't need assistance.

Village Lead at start of Net, advised all Stations to Use Format Tango 9M

Let's look at different ways of sending and receiving information:

INDIVIDUAL REPORTS ON PIECES OF PAPER:

- Village Lead ... "Jim go ahead"
- "THIS IS VILLAGE JIM: - WE HAD AN EARTHQUAKE."
- Lead – "How bad is it? "
- Village Jim - - "glassware broken, books off shelf, floor lamps topple."
- Lead – "anything else?"
- Village Jim – "yeh , ahhhhh, my electric is off."
- Lead – "anything else?"
- Village Jim – "my wife says nothing is working."
- Lead – "can you give more detail?"
- Village Jim – "okay – okay – uhhhh, no lights, no cell phone, land line stopped working, internet stopped working in the middle of Gone with the Wind and I didn't even get to eat my pop corn."
- Lead – "anything else?"
- Village Jim – "no I don't think so --- hey honey, anything else,.... NO."
- Lead – "are you okay and do you need any assistance?"
- Village Jim – "no, we are okay and don't need any help."
- Lead – "Roger, next station..."

NOTE: THAT WAS JUST ONE REPORT- WHAT IF YOU NEEDED TO HAVE A WELFARE CHECK ON A FAMILY MEMBER WITH MEDICAL PROBLEMS?

Next Report – a little better organized

-Village Lead says: “Bill go ahead.”

-Bill says: “this is Village Bill

**-Earthquake - glassware broken, books off shelf,
floor lamps topple.**

**-Electricity is off. All Communications out - no
land lines, no cell phone, 911 not working,
internet not working.**

- I am okay don't need assistance. End Report out.”

Village Lead says: “Roger, next”

**[YOU CAN TRANSMIT JUST LIKE ABOVE, OR
YOU CAN TRANSMIT AS SHOWN ON THE NEXT PAGE]**

Next Report – a little better organized

-Village Lead says - “Bob go ahead.”

-Bob says: “this is Village Bob:

“Qxi D /F /M6 /Y end report, out” (preferred)

or “ /F /M6 /Y end report, out ”

- Village Lead says – “Roger, next....”

Now – imagine 40 reports just like the above coming in from all of the different neighborhoods in Shingletown.

They all need to be recorded by Area Leads, and then relayed (*repeated*) to:

- the YOUR Neighborhood AREA Coordinator;

and then to the

- NET CONTROL STATION.

Long reports – mean other reports are delayed !

NOW,

**Let's look at the 3 reports from the Village
using Format Tango 9M as a check off list**

**REMEMBER – ALWAYS THINK ABOUT WHAT YOUR ARE
GOING TO SAY BEFORE YOU TRANSMIT.**

The Village Reports would be summarized like this and relayed:

Lead says: “Village Coordinator this is Village Lead – ready to copy?” [This takes place on MURS]

Coord. says: “ Village Lead Go “

Lead says: “**Village Coordinator this is Village Lead Report Village Division 3 3 stations reporting QTH N QXi D /F /M6 /Y end report out. “**

Coord says: “Roger. ...”

Coordinator will then RELAY above to Net Control Station [this takes place on the HAM Frequency].

In addition to the Village Reports – assume the following report was relayed in **from Viola** (which you didn't hear because it was being relayed on a HAM frequency with all the other area reports – one at a time [or one Area Summary at a time] –

ALL BEING FUNNELED TO ONE STATION – NET CONTROL!

[NOTE: EMERGENCY / PRIORITY TRAFFIC CAN BE TRANSMITTED TO EMERGENCY SERVICES BY ANYONE IF THEY HAVE THE COMMUNICATIONS CAPABILITY – E.G., ACCESS TO PHONE, EMERGENCY SERVICE RADIO, ETC...).

NCS says: “Viola Coordinator – Go.”

Viola Coordinator says: “**Net Control, this is viola Coordinator.**

Report Viola Division 5 1 station reporting

QTH N QXi D /F /M8 /R1 /R2 End Report.

Supplemental to follow. out.

NCS says: “ Roger.

Net Control takes all the reports and summarizes them, and may make a supplemental report to Emergency Services.

The overview mapping for Village and Viola is next shown:

Preliminary Mapping Illustration

Vers: 20181102 (73 KGPDS working DRAFT)

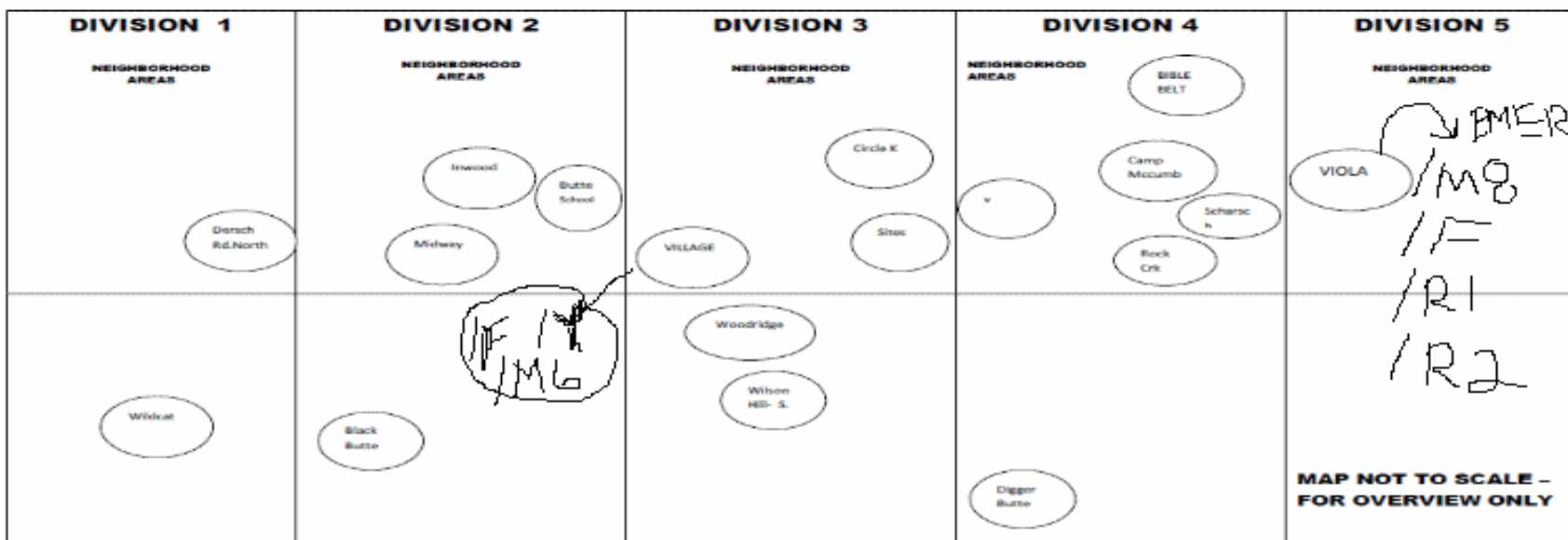
SHINGLETOWN EMERG. RADIO NETS Auth: 970 D76 2X0+

FORMAT TANGO 9A

GEN PUBLIC

NET CONTROL / AUX SUMMARY PAGE AND ROUGH APPROX. MAPPING

STEP 4 – NCS / HQ: RECEIVES CODED BREVITY RPTS, THEN MAPS, DOES ANALYSIS, PUTS IN PLAIN ENGLISH, MAKES RECOMMENDATIONS ... [USE LARGER MAP (FMT ROMEO ___) IF NEEDED]. THIS IS NOT 911 – CALL 911 FOR EMERGENCIES.



STEP 5: NCS / HQ TX PLAIN ENGLISH (BRIEF) SUMMARY ON HAM NET FREQ. MAKE SUPPLEMENTAL CALLS TO EMERG SERVICES (911 / CAL FIRE) AS/IF NEEDED.

PLAIN ENGLISH SUMMARY SITREP AS OF: Date: 5/6/2019 Time: 1320 hrs

SITREP: earthquake dispatch radio team to viola - comms / dispatch rapid damage assess team-viola
Recommendations: all stations monitor traffic to assist with emerg/priority traffic / communications blackout
Actions Taken: SUPP. CALL TO 911 : Other: call cal fire - Emer.Freq. Buildings Collapsed Viola

WHAT IS NEEDED? YOU ARE NEEDED!

- As members of the community that will be on the receiving end of Wildfires, Earthquakes, other natural disasters, or incidents, we need to take action!
- Without your help, the plan is nothing but a plan.
- REMEMBER – THIS IS NOT A SUSTITUTE FOR 911

**LET'S NOT HAVE A "PARADISE FIRE" SITUATION HIT
SHINGLETOWN.**

WILL YOU PLEASE HELP OUT?

THANK YOU.

SHINGLETOWN EMERGENCY RADIO

A. NATHAN ZELIFF

K6PDS 73

530-474-3267

Part of larger plan - see Nets, Sub Nets, ...

ACTIVATED UPON:
 -SER TONE & ALERT; OR
 -FIRE TONE OUT FROM 911

SHINGLETOWN EMERGENCY RADIO PLAN: NETS, SUB NETS / GRND TEAM ACTIVATION

NET CONTROL [STEP 1]

NC & HQ Prim: _____
 Alter: _____ AND / OR
 SCAN PLAN FREQ

FREQ=SCAN PLAN ONLY
 SEE FMT NOVEMBER

PUBLIC LISTENS HERE

VOLUNTEER Hams Give Reports.

Non licensed PEOPLE Listen.

STATUS:
 -FIRE
 -ROADS
 -EVAC.
 -ORDERS
 -ETC...

NEIGHBORHOOD Murs Coord. (LICENSED) RELAYS INTO NET CONTROL FOR EACH NEIGHBORHOOD NON Ham Net (NON LICENSED) [THIS STEP IS UP TO EACH NEIGHBORHOOD]

---HQ---
 [STEP 2 IF NEEDED]
 HQ 1, HQ 2

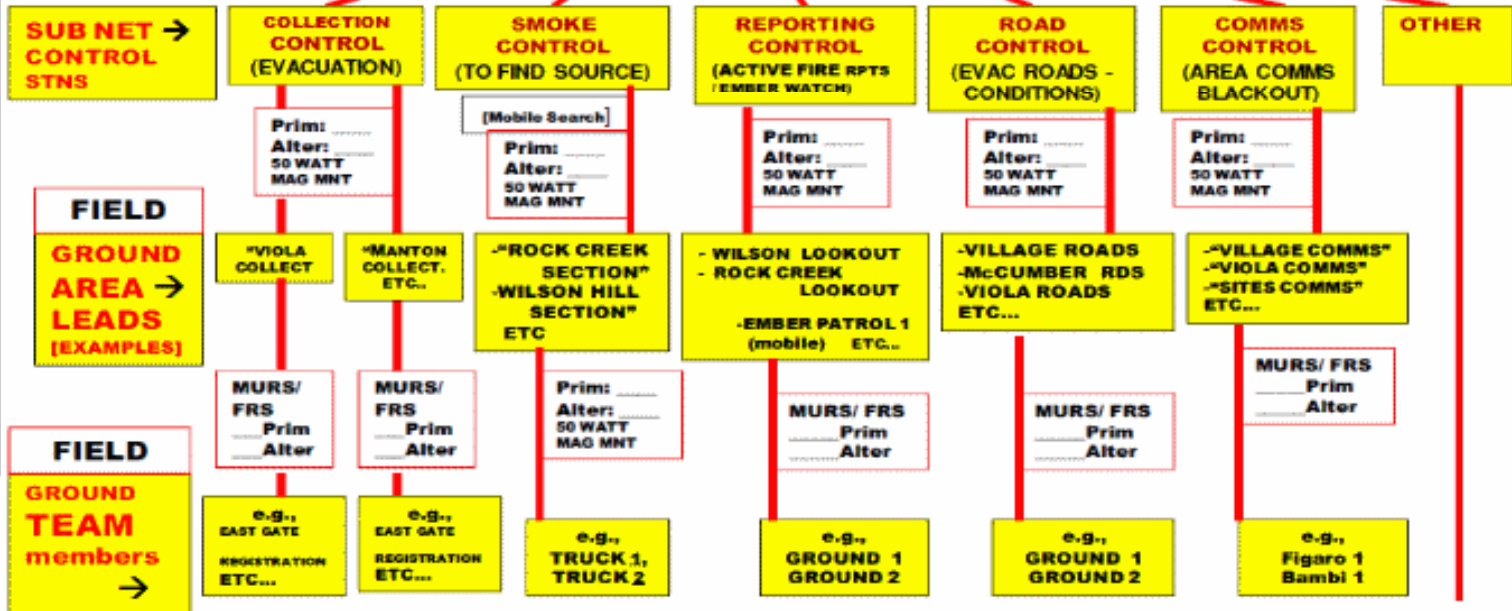
NC / HQ CONTACT, AS NEEDED,
 TO / FROM: CAL FIRE / SHERIFF / OES

HF, VOICE, CW, DIGITAL, LOCAL
 GROUND WAVE, ETC...
 Contacts: National, Regional,
 State, Local ...

Prim: _____ Alter: _____
 USE DEDICATED 50 WATT RADIOS
 (MUST BE ON DESIG FREQ. AT ALL TIMES)

-FOR FREQUENCY ASSIGNMENTS:
 - PRIM / ALTER
 SEE FMT MIKE 6 AND FMT MIKE 6F
 - TICKLER LIST - SEE FMT LIMA 2
 - Propagation - See FMT ROMEO 4

Each "CONTROL" STN IS TO RECEIVE FACTUAL INFORMATION FROM ITS ASSIGNED "AREA LEADS" AND THEN DO MAPPING; ANALYSIS AND SUMMARY REPORTS FOR RELAY TO HQ. HQ COORDINATES ALL REPORTS AND RELAYS INFOR. TO /FROM PUBLIC NET AS APPROPRIATE.



THIS IS NOT 911. FOR THIS TO WORK, LIC. HAMS AND THE COMMUNITY MUST HELP!
 NEED VOLUNTEERS TO MAKE THIS WORK. **FORMAT LIMA 00 [SEE FMT LIMA 2 FOR SET UP]**
LICENSED HAMS, SELECT WHAT APPLIES AND SET UP YOUR OPS CONTROL BOARD. FOLLOW THE PLAN.